



Library Update

9 September 2019

I ILLINOIS

Agenda

- Dean's Update
 - FY20 Budget & Plans
 - Questions & Discussion
- Library Building Project
 - Capital Delivery Process
 - Current Project Status
 - Special Collections Research Center
 - Main Library Programming and Conceptual Design
 - Questions & Discussion



Dean's Update

- My Commitment to You
- Support Related to the FY20 Budget Request
 - Collection inflation
 - Director, DEI
 - Illinois Distributed Museum
 - Data Science
 - Minimum wage increase, part 1

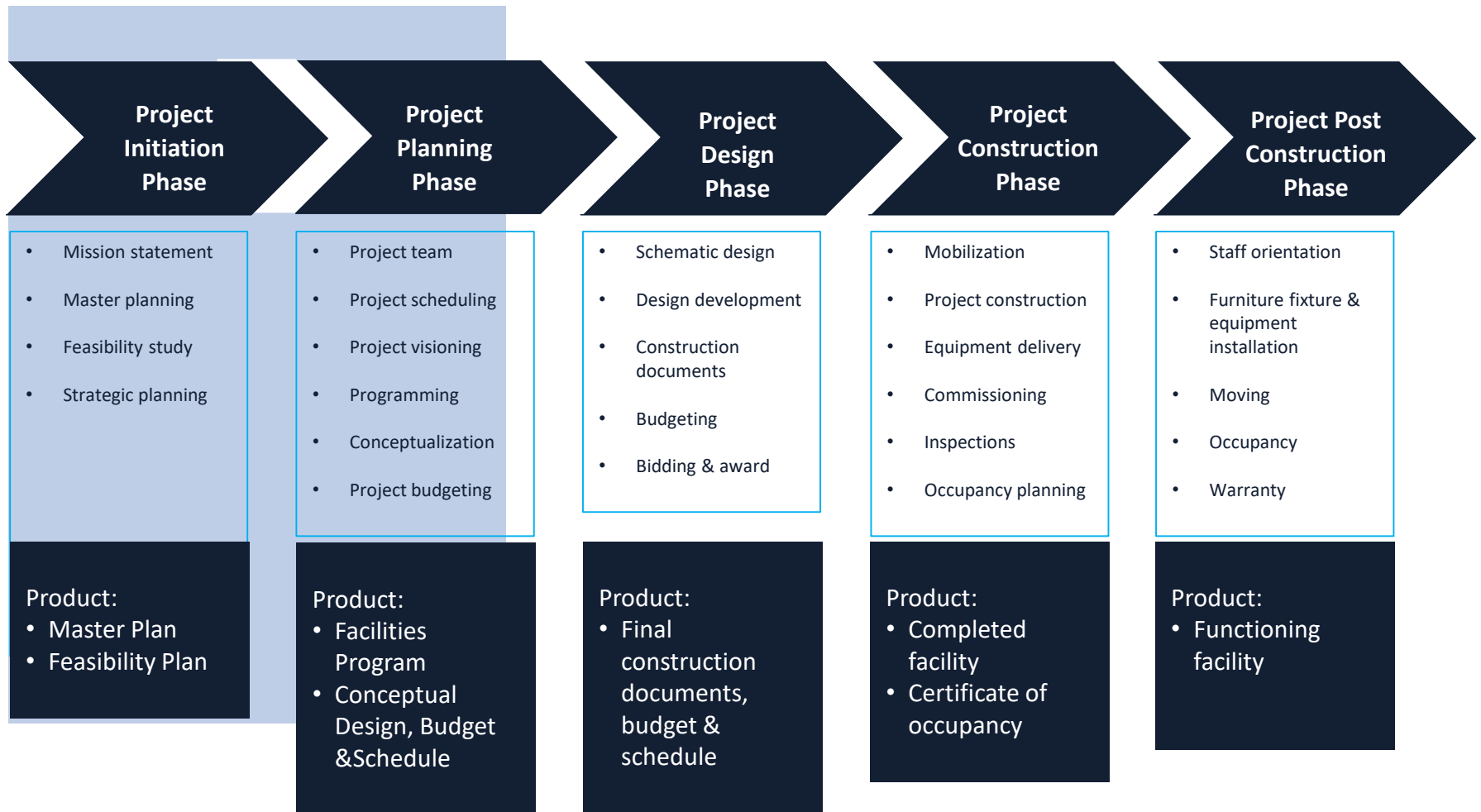


Dean's Update

- Additional commitments
 - Forgiveness of Oak Street “debt” and use of funds for above
 - Reinforcing campus commitment for building project
 - \$1m toward Room 220
 - Future growth in budget
- Salary program and CMER
- New *strategic* hiring (\$500k) in addition to pre-existing plans/commitments
- Funding for strategic initiatives



Capital Delivery Process



Current Status

- Staff Support Activities
 - Wellness Workshops – Thanks to Staff Development and Training Cmte.
 - If there are other things that we can be doing, please let us know.
- Current Project Status – Special Collections Library
 - Kick-off Meeting: June 17, 2019
 - First draft received, comments submitted, and follow-up call held.
 - Revision expected shortly and a Draft report on Part Two expected on 9/25/2019.
- Current Project Status – Main Library
 - Received what is – per feedback submitted – a preferred scheme.
 - Already receiving comments from Library personnel





Main Library: Visioning, Space Prioritization, and Review

- Three day workshop...
- Project Vision:
 - The Main Library's comprehensive collections and expertise present a wealth of resources that advance UIUC's engagement with the lifecycle of research and creation of knowledge.

The building exemplifies a balance of traditional and emerging ways of working, access to/use of collections, and architecture.

This environment....

- Supports scholarship in all its forms....
- Effectively connects users to relevant spaces, services, and collections....
- Enables convergence and divergence, addressing a range of needs....
 - Serves individual (research) pursuits....
 - Creates a vibrant hub....
- Provides flexible spaces to adapt and respond to evolving user needs....
- Promotes accessibility and inclusivity with its spaces, people, and resources...





Scenario: Partner+

- Partner+ Space Characteristics:
 - Individual/private spaces where researchers can work
 - A range of tech-equipped user spaces
 - Flexible event spaces
 - Exhibit spaces
 - Space for more library instruction
 - Blended staff and user space
- Design Principles for Collections
 - Maintain current number of volumes in library
 - Show importance/authority and entice use
 - Enable easy movement and combined use of physical/digital media
 - Highlight the evolving use of physical media

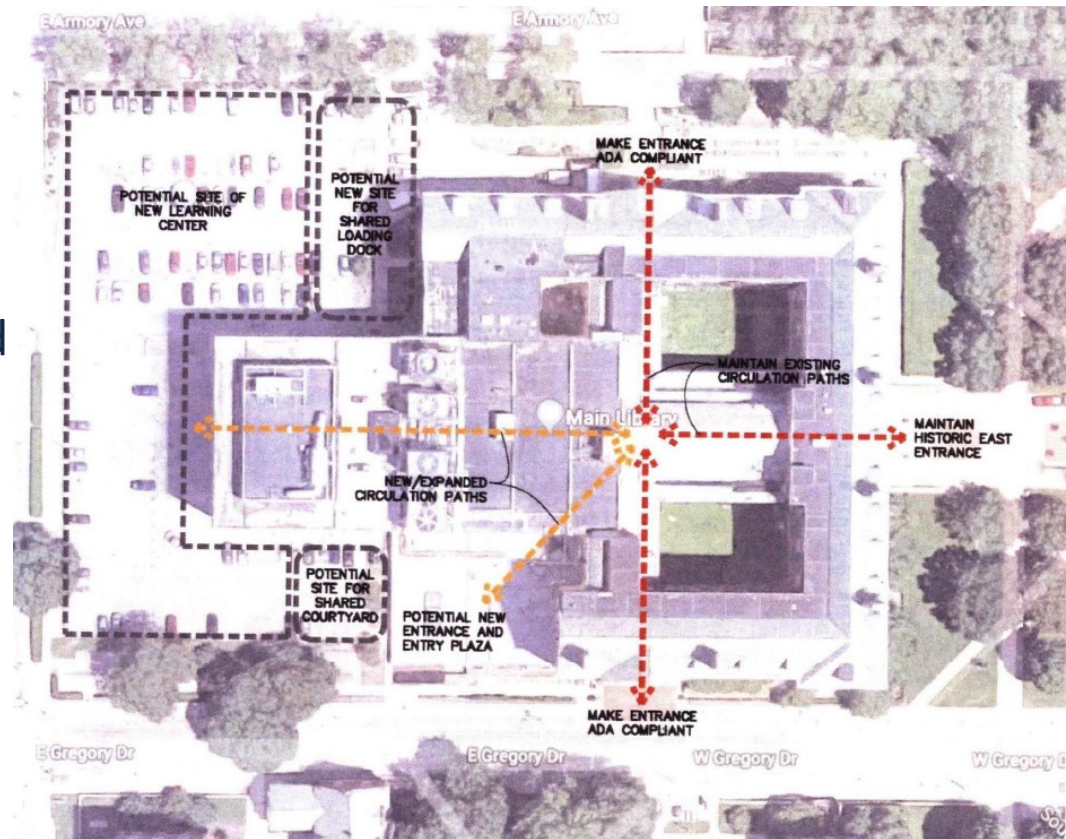


Scenario: Partner+

- What might we see:
 - Collections
 - Departmental Libraries
 - Learning Center
 - Media Commons
 - Scholarly Center
 - Cooperative Research Commons
 - Graduate Commons
 - An Entry “Hub”
 - Café
 - Flexible Instructional Spaces
 - Collaboration/Hangout Spaces
 - Individual Research Spaces
 - Blended Staff+User Space
 - Collaboration Space

Initial Document Highlighted Opportunities.... Some Used....

- North/South Passageway
- Circulation Room as “event space”
- ~~New Southwest Modern Entry~~
- Courtyards: Café or Glass roofed event spaces, interior spaces
- 4th Floor Destination Space
- Improved Adjacencies and Transparencies
- **Caveat:**
 - The outline of the proposed learning center is all TBD and purely a place holder at this point.





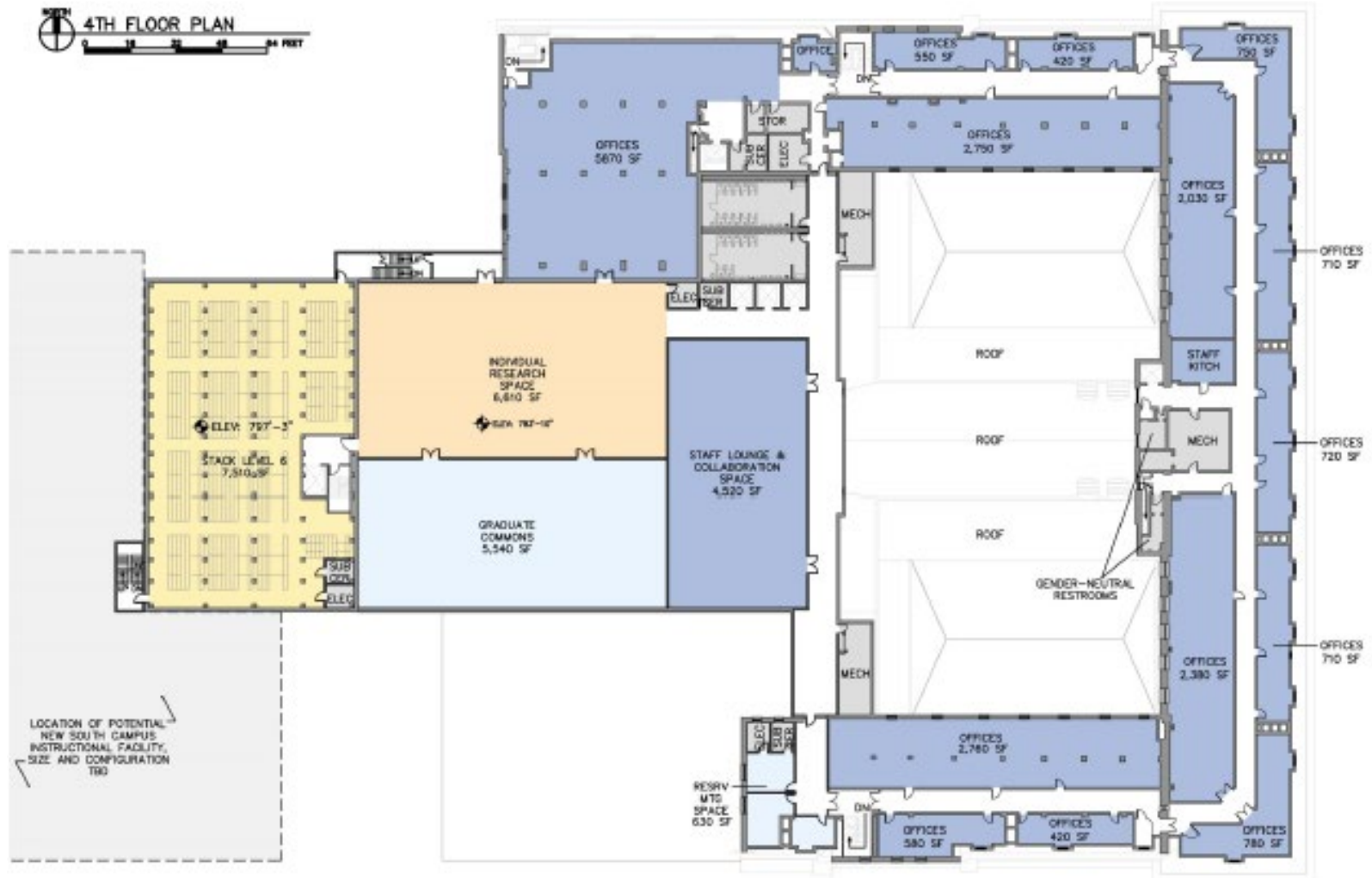
Conceptual sketch, south elevation of the new infill addition.



Third Floor



Fourth Floor



Questions and Discussion...

- Discussion/Questions?